

Step One

Install LightScribe template software to PC

1. Download and install the following LightScribe software (from www.lightscribe.com):
 - A. LIGHTSCRIBE SYSTEM SOFTWARE (LSS)
 - B. LIGHTSCRIBE TEMPLATE LABELER

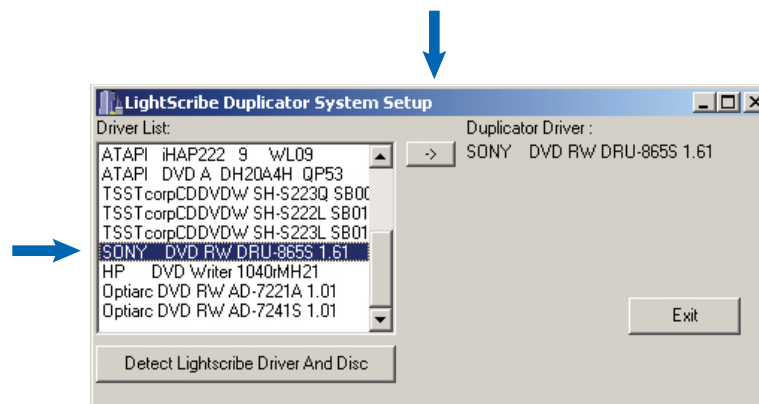


Image from Lightscribe.com website. All brand and products are trademarks or registered trademarks of their respective holders.

Step Two

Select the LightScribe Drives for the duplicator and Install the correct LightScribeDrives.

1. Open the LightScribeDriverSelect.EXE file on your PC
2. Select the LightScribe Duplicator drive from the list and click the arrow to add the drive
3. The new LightScribe drive will be added to the supported drive list



Note :

Everytime the Duplicator changes LightScribe drives, you must re-select the drive before creating a LightScribe image Keep this window open at all times while using the Lightscribe lableing function

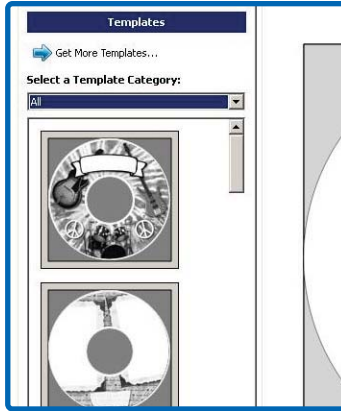
Step Three

Design LightScribe Template and LightScribe Printing on a PC

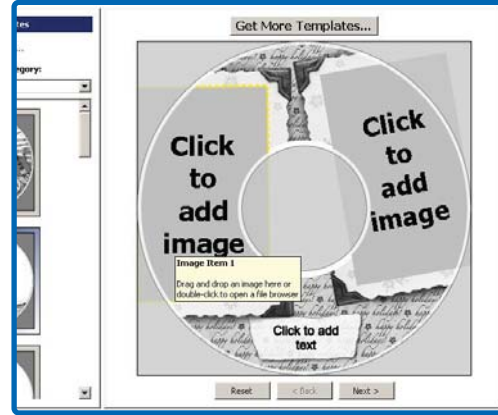
1. Click the LightScribe icon to launch the LightScribe Template software on your PC
2. Follow the procedures below to create your label image



Select a Template from the menu on the left



Add Image and Text by clicking on the image



3. Click on "Next" button after the desired text and images have been added. Ensure that the LightScribe drive selected is correct.



4. Click the "Print" button to save the LightScribe image (.LSI file) to a USB drive*
5. Plug the USB drive* into the duplicator or place the disc into the duplicator reader (ROM)
6. Place blank LightScribe enabled disc(s) upside down (top facing down) into writer drive tray(s)
7. Select duplicator utility function "10.9.PRINT LS Label" from the control panel and press "ENT" button.
8. The system will read the image from the USB drive* or disc and start printing the LightScribe label.

** Only available on certain models with a USB port located on the front LCD panel.*



Note:

Press ENTER button after loading the desired amount of blank discs if the duplicator does not immediately start duplicating.

When loading image files, do not plug in USB drive and place disc into DVD-ROM simultaneously (Duplicator only reads from one source at a time)